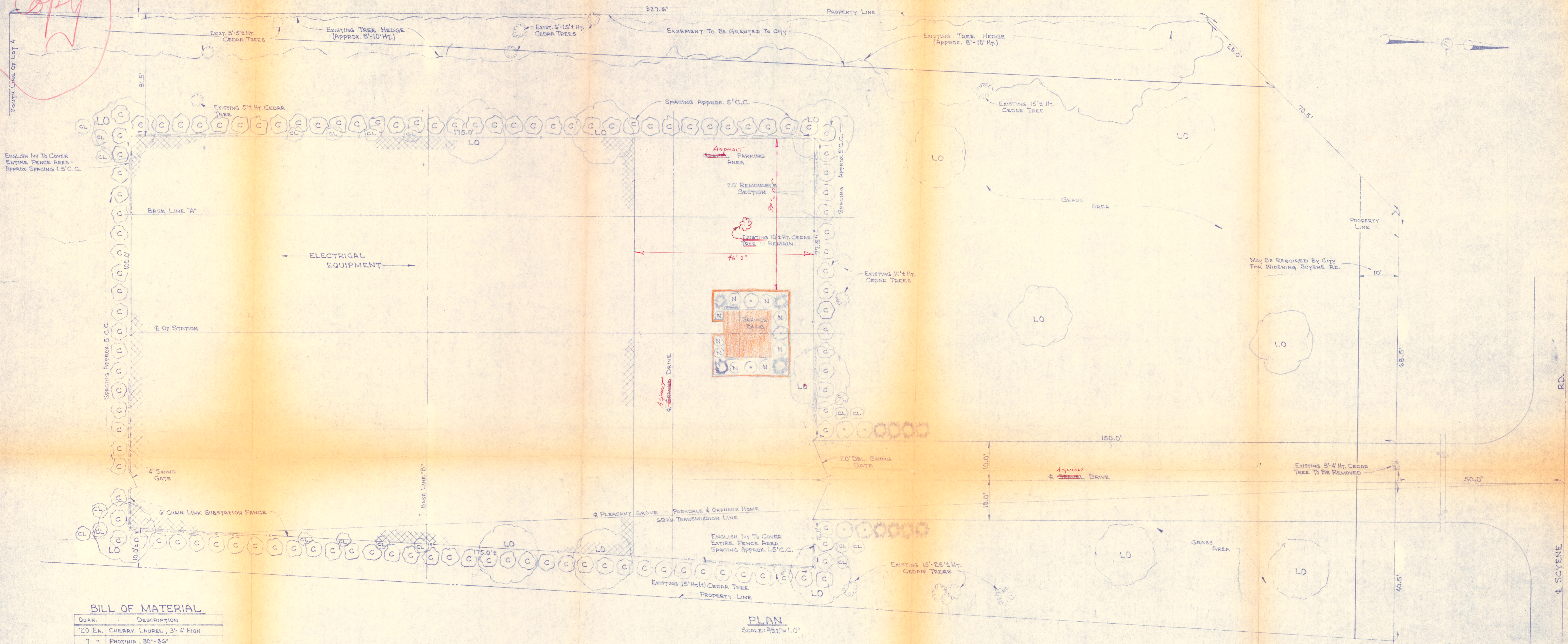


Copy



BILL OF MATERIAL

QUAN.	DESCRIPTION
20 EA.	CHERRY LAUREL, 3'-4" HIGH
7 "	PHOTINIA, 30"-36"
5 "	NANDINA, 18"-24"
112 "	RED CEDAR, 5'-6" HIGH
12 "	ABELIA, 30"-36"
2 "	HONEYSUCKLE, 18"-24", B & B
365 "	ENGLISH IVY, 12" HIGH, CANNED
15 "	LIVE OAK, 12" HIGH, 2 1/2"-3" CAL.

PLAN
 SCALE: 1/8" = 1.0'



- LEGEND**
- CL CHERRY LAUREL
 - PHOTINIA
 - N NANDINA
 - C RED CEDAR
 - ABELIA
 - HONEYSUCKLE
 - ENGLISH IVY
 - LO LIVE OAK
 - EXISTING TREE HEDGE
 - SLAG SURFACED AREA
 - GRAVEL SURFACED AREA

REFERENCE DRAWINGS:
 STATION ELEC. EQUIPMENT - PLAN & ELEV. E-6951
 FOUNDATION PLAN E-6956

CHECKED BY
 APPROVED
 H. ALDEN DEYO
 DIRECTOR OF PLANNING
 JUL 13 1959
 APPROVED
 City Plan Commission
 Book # Page #

Drawn: STEPHENS MARCH 6, 1958
 Traced: [Signature]
 Checked: [Signature]
 Correct: [Signature]
 Approved: [Signature]
 Date: 3/12/58
 Chief Eng'r.

I.R.# _____ EST.# _____
 JIM MILLER RD. SUBSTATION
 GENERAL LOCATION PLAN
 & LANDSCAPING
 DALLAS POWER & LIGHT CO.
 DALLAS, TEXAS
 SCALE AS SHOWN E-6952